



## Resources on Biking in Lee County--maps and stories By BikeWalkLee, 10/3/13

As the Fall arrives and residents and tourists begin to return, arrive, or think about biking more now that the weather is cooling off, I thought it was a good time to pull together all the maps and stories that have been produced over the past year to promote biking in Lee County. **In Section I**, I've provided the resource section on BikeWalkLee's website front page that directs you to this list of maps.

**In Section II**, I've provided the eight BikeWalkLee columns in News-Press' "Go Coastal" section that have highlighted new rides and maps. The list is as follows:

1. Tour de Parks route
2. University Loop
3. Biking on Sanibel
4. Biking in Ding Darling Wildlife Refuge (Sanibel)
4. Biking in Cape Coral
5. MPO Countywide biking facilities map
6. Biking to Spring Training Games

### Here are some ways you can use this information:

- post it on your websites, blogs, and/or distribute in your newsletters
- if you have a bike shop or office, you can print out the key maps (such as Tour de Parks and University Loop) and distribute to your customers or members
- If you want hard copies of the MPO Countywide biking facilities map to distribute to your customers or members, contact Brian Raimondo at MPO 330-2240.

To keep up on new maps and stories, sign-up for BikeWalkLee's blog emails and our newsletter (see links below). For example, this week's BWL column will highlight new biking opportunities in the Ding Darling refuge. Thanks for helping spread the word about the growing number of good biking opportunities in our community. Feel free to contact me if you have any questions. For your convenience, I've attached the content of this email as a word document.

Darla

Darla Letourneau  
Steering Group  
BikeWalkLee  
*a coalition working to complete the streets in Lee County*  
[dletourneau@bikewalklee.org](mailto:dletourneau@bikewalklee.org)

[www.BikeWalkLee.org](http://www.BikeWalkLee.org)

Blog: <http://bikewalklee.blogspot.com/>

Look for us on Facebook & Twitter

239-850-3219

## **I. Map Resources**

**Links to Maps found on BikeWalkLee website:**

**[http://www.bikewalklee.org/resources\\_maps.html](http://www.bikewalklee.org/resources_maps.html)**

### **RESOURCES: Maps**

New Lee County bike PDF[map](#)

, produced by the Metropolitan Planning Organization... if you prefer a faster-loading, lower-resolution version, click [here](#).

Ride to spring training -- route [maps](#) to both JetBlue Park (Red Sox) and the Lee County Sports Complex (Twins)

University Loop [map](#)

Tour de Parks [map](#)

Sanibel bike system [map](#)

Locator [map](#) for routes to JetBlue Park

Bike routes (maps) to JetBlue Park:

- Gateway Community Pool [route](#)
- Daniels Parkway/Apaloosa Lane [route](#) and [alternate](#)
- Paradise Bikes [route](#)
- John Yarbrough Linear Park (north) [route](#)
- John Yarbrough Linear Park (south) [route](#)
- Lakes Park [route](#)
- FGCU [route](#)
- Trek Estero [route](#)
- All the [routes](#) with written directions

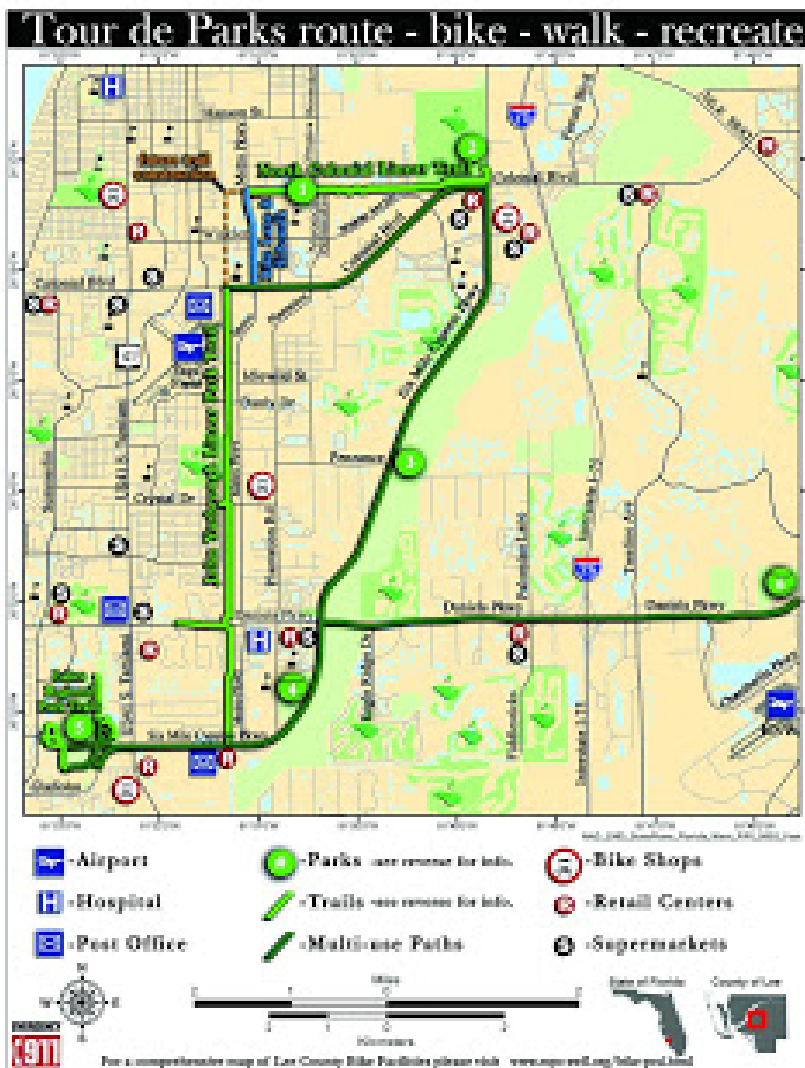
## II. BikeWalkLee News-Press "Go Coastal" Columns on biking opportunities

### 1. Tour de Parks Route

**BikeWalkLee Blog: Thursday, May 30, 2013**

<http://bikewalklee.blogspot.com/2013/05/bwl-columnbike-trips-offers-fun.html>

### **BWL Column: Bike trips offers fun, challenge at Lakes Park in Fort Myers**



Tour de Parks Route Map

Today's BWL column encourages you to check out the new Tour de Parks biking route and provides three suggested rides.

**[News-Press "Go Coastal" Section: May 30, 2013](#)**

Looking for a ride that's safe and interesting? One that keeps you off the roadways (except to cross them) and shows off some of the county's recreational assets?

Well, grab your bikes and head to Lakes Park in south Fort Myers.

You should start at this 279-acre park for two reasons: Plenty of parking and plenty to do for the non-bike riders in the crowd. (You can even use an easy ride around the park as a warm-up.)



Entrance to Lakes Park on Gladiolus Dr.

We'll give you three options for ride length – 8, 12 and 20 miles – and there's [even a map of the route \(dubbed the "Tour de Parks"\)](#) on your way out of the park. There are also wayfinding signs with directions and distances along the route, although not always facing in the right direction for some riders.

Start out from Lakes Park and turn left onto the bike path that runs along the north side of Gladiolus Drive to its intersection with U.S. 41. Cross (carefully and patiently) and pick up the path on the north side of Six Mile Cypress Parkway. Stay on that until you reach Daniels Parkway, passing Hammond Stadium (where the Twins and Miracle play) on your left.

- If you're doing **8 miles**, turn left onto the path on the north side of Daniels and stay on that until you cross Metro Parkway and Ten Mile Canal. Then turn south (you may need to go further west to the signal to cross safely) and pick up the Yarbrough Linear Park trail south to Six Mile Cypress, turn right and proceed back to Lakes Park.
- For the **12-mile route**, continue north on Six Mile Cypress Parkway (you can switch to the path on the west side if you prefer) to Penzance Blvd. and the Six Mile Cypress Slough Center. This is the hub of the 3,400-acre wetlands ecosystem, which includes a 1.2 mile boardwalk into the slough itself (for those who'd like a little walk). When you're done, retrace your ride (or swing over to the Linear Park Trail on the 8-mile route) and return to Lakes Park.



New wayfinding signs

- Going the full **20 miles**? Stay northbound on the Six Mile pathway to the intersection with Colonial Blvd. – and be careful on the northern portion with all the shopping center entrances. Negotiate the intersection to end up on the northeast corner, where you’ll find the Calusa Nature Center nestled in the trees. This 105-acre site has a museum, three nature trails, a planetarium, and butterfly and bird aviaries.

Heading back to Lakes Park, you can either use the Colonial Blvd. trail (more direct and protected) or the North Colonial Linear Park Trail (more scenic), which goes past the city’s Neighborhood Trailhead Park when it crosses Shoemaker Blvd. However, it also means you’ll have to ride in the bike lane on Metro Parkway south from where the Linear Park ends down to Colonial Blvd. – which may be off-putting for some.

Either way, pick up the Yarbrough trail along Ten Mile Canal south to Six Mile Cypress, then return to Lakes Park and the end of your ride.

Once you master this route, you can start from different points or throw in other side loops to expand your biking horizons even further. Use the new bike map or the county’s [“Tour de Parks” map](#) for guidance.

#### **More Information**

- For a map of the [full Tour de Parks route, download one](#) from bikewalklee.org or leeparks.org. — **BikeWalkLee is a community coalition raising public awareness and advocating for Complete Streets in Lee County. Information, statistics and background online at BikeWalkLee.org.**

## **2. University Loop**

# BikeWalkLee Blog: Friday, September 6, 2013

<http://bikewalklee.blogspot.com/2013/09/bwl-column-shake-up-your-routine-on.html>

## BWL Column: Shake up your routine on this new route



### ZOOM

*A biker pedals along the University Loop, an 8.7-mile route that parallels Interstate 75 on both sides in south Lee County. / Photos special to The News-Press*

### About the loop

*This route (as well as the Tour de Parks spotlighted a while back) sprang from the countywide bicycle-pedestrian master plan developed by the Lee County Metropolitan Planning Organization out of a desire to provide some demonstration routes to encourage more biking and help connect the existing bike/ped infrastructure together in a more functional fashion. The county's Department of Transportation has picked up this effort, developing the route maps (such as the one shown here), designating the bike lanes and installing wayfinding signs to help orient riders to distances and directions.*

### More info

Lee County staffers have developed an annotated map of the University Loop (including some of the nearby amenities and facilities). Download it from the BikeWalkLee website, [bikewalklee.org](http://bikewalklee.org).



The sign identifies the University Loop.



Florida Gulf Coast University and two shopping centers are along the way.

Looking for a safe-riding route in the southern part of the county? Try the University Loop. This 8.7-mile route parallels Interstate 75 on both sides — using Three Oaks Parkway to the west and Ben Hill Griffin Parkway to the east — crossing at the north on Alico Road and at the south on Estero Parkway at Don Eslick Bridge. Bike lanes throughout with a mix of sidewalks as well make it a good route

for riders who don't want to mix it up with traffic very much, although there will be intersections that require attention and a little patience (just as they demand from motorists). Touching a half-dozen communities and with easy access from numerous others — including most of San Carlos Park — this should be a popular ride for nearby residents. Not only will that mean you'll have company, but it's also good for biker awareness — there's safety in numbers, and drivers tend to be more aware of cyclists when they see them on the same routes regularly.

The loop also passes by Florida Gulf Coast University (hence, its name), so riders can add that in for a quick side trip. (You'll have to ride on the sidewalk or roadway to get into the university, since it only has bike lanes on the inner loop.) On the west side, you'll pass by Three Oaks Park, a good place to start, take a break or watch other sports in action (since the park has a lot of courts and fields to use). There's also direct access to one shopping center (Gulf Coast Town Center) and another (Miromar Outlets) is close by. If you really, REALLY need to get your shop on, Coconut Point Mall is about 2 miles away from the southernmost section of the loop — but remember that shopping by bike can put a damper on how much you buy (or at least carry home).

Also remember that, if you're riding in shopping centers, they often are filled with people not paying attention to you (but bicyclists should be used to that). Ride defensively, and be sure to yield to pedestrians — if you're rolling, you're a vehicle and those rules apply.

To use the loop as a jumping-off point, or to ride from your usual haunts to try it out, you're close to plenty of other bike infrastructure and communities:

- To the north, it's about 4 miles to Daniels Parkway via Ben Hill Griffin Parkway/Treeline Avenue, passing by the airport. That ties you in to the Tour de Parks loop as well.
- To the south, Bonita Springs is about four miles away via Three Oaks and Imperial parkways.
- Heading west, Michael G. Rippe Parkway (the Metro Parkway extension) and U.S. 41 are between 2.5 and 3 miles away on Alico Road. If you take Estero Parkway, U.S. 41 is less than 2 miles away.
- Heading east? Good luck. Alico Road will loop back into Corkscrew Road, but neither are for the faint of heart (or weak of leg).

\*\*Published in the [News-Press](#) on September 5, 2013  
also found [here](#)

### **3. Biking on Sanibel**

#### **BikeWalkLee blog: Thursday, June 27, 2013**

<http://bikewalklee.blogspot.com/2013/06/bwl-column-enjoy-excursion-bike.html>

#### **BWL Column: Enjoy excursion bike-friendly Sanibel**

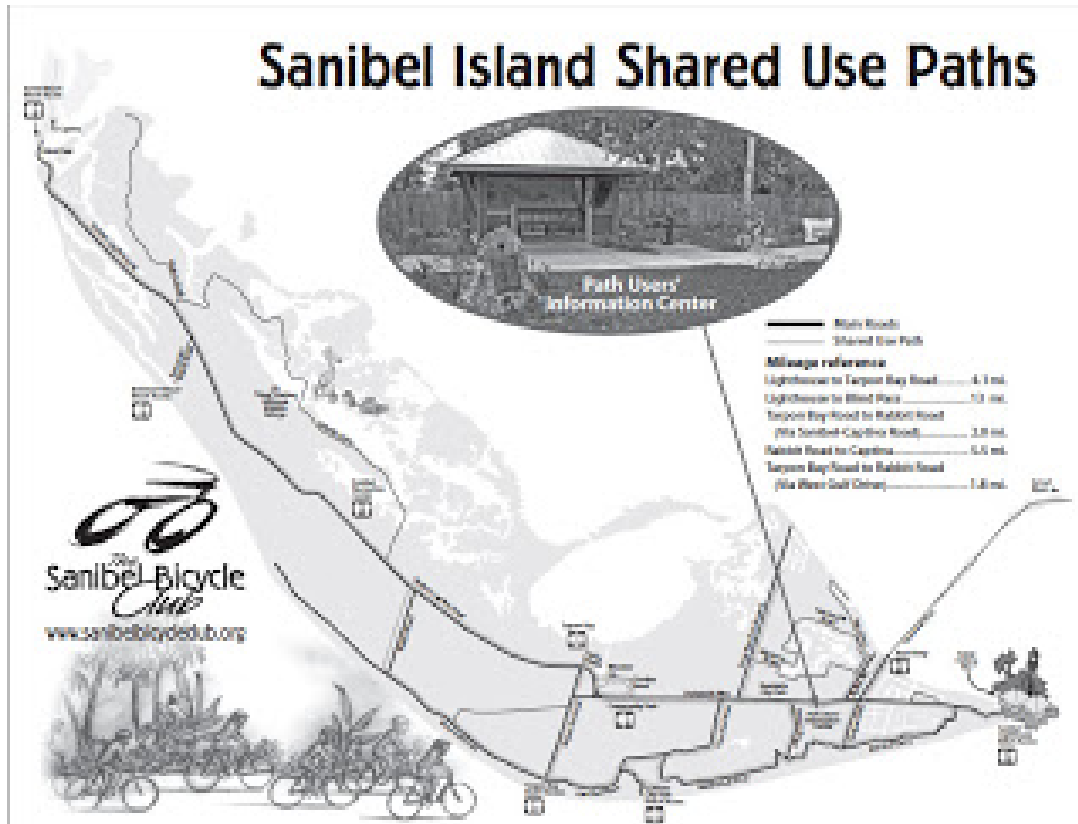
[News-Press "Go Coastal" Section 6/27/13](#)  
[BikeWalkLee Column](#)



For years, Sanibel has been the gold standard for bike-friendly communities in Southwest Florida — or, more correctly, the bronze standard, since that’s the distinction the town earned in the Bike Friendly Community designation from the League of American Bicyclists.

With an extensive system of interconnected shared-use paths and the most bike-friendly folks around, the island offers plenty of riding options — plus, in season, bicyclists can often make better time traversing the island’s main drag thanks to the tourist-clogged roadways.

Off-island locals can either ride out to the island via the Sanibel Causeway, rent a bike from an island outlet or park and bike from a number of starting points. If you take the Causeway, you’ll be on the spacious (by local standards) shoulder along McGregor Boulevard from Shell Point Village on, and your legs will get a good workout climbing over the high bridge, a rarity in elevation-challenged Southwest Florida.



Bringing your bike? Parking options include: all the public beaches (for a fee); some parking at two small city parks on Periwinkle Way (Roadside Park and Sanibel Community Park); at Bailey’s General Store (corner of Periwinkle and Tarpon Bay Road); at the Wildlife Refuge and the Sanibel School (both on San-Cap Road). Some require payment and may have other rules for use, so check the signs.

If you don’t own a bike, not to worry ... there are two major bike rental companies on Sanibel that rent a wide range of bikes for all ages and skill levels. Both are located on Periwinkle Way: Billy’s Rentals ([billysrentals.com](http://billysrentals.com)) and Finnimore’s Cycle Shop ([finnimores.com](http://finnimores.com)).

The island measures 13 miles (as the bike rides) from the Lighthouse to Blind Pass, with some 23 miles total of pathways. You have two main options for riding — the commercial corridor of Periwinkle Way or the more residential Gulf Drive, a circuitous route that winds from East to Middle to West Gulf Drives. The two connect at numerous points — Rabbit Road, Tarpon Bay Road, Casa Ybel Road, Donax Road and Lundgren Boulevard — so it’s easy to create a loop that’s as long as you want.

Heading toward Blind Pass, one favorite side trip is unavailable this summer, as Wildlife Drive through the J.N. “Ding” Darling National Wildlife Refuge is closed for repairs. The ride to the pass is still worth the trip, and you can continue on to Captiva (riding the shoulders) if you’re willing to share the road with slower (25 mph) traffic for the 3.5-mile ride.

**A few tips:**

- Be sure to visit the Path Welcome Center (established through a public-private partnership spearheaded by the Sanibel Bicycle Club), along the Periwinkle path between Lundgren and Donax. It’s a good way to get oriented to the path system and to learn a little about Sanibel’s history and natural environment.
- This is a shared-use path, meaning it includes walkers, runners and bikers of all skill sets — so it can be crowded at times and requires a sharp eye due to a variety of forward speeds. Those who prefer a higher gear can opt to ride in the roadway, but there’s not much room so be ready to share the road.
- If you’re looking for places to eat or drink along your ride, Periwinkle has the best options. Some of the other routes — particularly the Gulf Drives and San-Cap Road — have a scarcity of shops, so plan accordingly.  
It’s Southwest Florida, so bring water and stay hydrated.
- Finally, summer on the islands means mosquitoes — something those who live on the mainland can easily forget. While Mosquito Control does a good job at controlling the pests, those who find themselves popular with the winged bloodsuckers might want to pack some repellent.

**More information**

Plan your ride: Download a user-friendly (and nicely illustrated) Sanibel path map at [news-press.com](http://news-press.com) and [sanibelbicycleclub.org](http://sanibelbicycleclub.org).

Looking for parks? Go here for a map of all Sanibel parks, beaches and public parking facilities: [City of Sanibel website](#).

— **BikeWalkLee is a community coalition advocating for complete streets in Lee County — streets designed, built, operated and maintained for safe and convenient travel for all users: pedestrians, bicyclists, motorists and transit riders. [BikeWalkLee.org](http://BikeWalkLee.org).**

## **4. Biking in Ding Darling Wildlife Refuge (Sanibel)**

**BikeWalkLee Blog: Thursday, Oct. 3, 2013**

**BWL Column: Awaiting Wildlife Drive reopening on Sanibel**

<http://bikewalklee.blogspot.com/2013/10/biwl-column-awaiting-wildlife-drive.html>

*BWL's column highlights the new biking opportunities through the Ding Darling Wildlife Refuge....although delayed by the government shutdown!*  
[News-Press"Go Coastal" section: Oct. 3, 2013](#)



### Wildlife Drive in Ding Darling Refuge

Ready for a ride through the Refuge? You'll find a smoother road ahead, thanks to recent improvements. But, thanks to the federal government shutdown, you're going to have to wait a little longer to try the new roadway out.

The venerable J.N. "Ding" Darling National Wildlife Refuge on Sanibel has long been a bicyclist destination, combining an up-close trip through a natural national treasure with easy access via Sanibel's extensive bike-path system. But Wildlife Drive has been closed to traffic since mid-May, as the road was resurfaced and other habitat restoration and management measures were undertaken.



What greeted visitors on Oct. 1st--"opening day"

The roadwork is a big boost for bicyclists, replacing the old pervious pavement installed in 2002 (which failed well ahead of schedule) with a much more rideable asphalt surface. So, many of you riders who sacrificed comfort for your close-to-nature experience can now enjoy a nicer ride as you enjoy the beautiful surroundings.

And here's a lot to enjoy: the refuge offers 6,400 acres of natural beauty in mangrove forests, seagrass beds, upland hammocks and estuarine waters. Beside the 4.23-mile Wildlife Drive which runs through the refuge (and links to island roads and bike paths to create a roughly 8-mile bike loop) there are shorter trails for hiking or biking — all of which offer you the chance to see a lot of animals and birds in the natural habitat.

That's the real plus to the drive's reopening: The chance to get on a bike (and get out of your car) to enjoy a unique natural experience. Thanks to the bike's slower pace and unenclosed access, you really can appreciate more of what the refuge has to offer — the smells and sounds and sensations, the quick glimpse of a wild animal you miss if you were behind the wheel, the vast vistas that beg you to stop, stand still and take it all in.

On almost any day (at least those when the federal government is open and has a budget in place), you get a breathtaking slice of nature that's unique to Southwest Florida — which is why people regularly come back to visit. Why not grab your bike and join them?



Sneak preview of new road surface

### **If you ride:**

Until the federal budget impasse is resolved, the refuge will remain closed to visitors.

Regular refuge hours are: Wildlife Drive: 7:30 a.m.-6:30 p.m. through October, hours change based on time changes and sunset. No traffic allowed on Fridays. There is no bike lane, but the overall slow traffic speeds (the 15 mph speed limit is enforced for both bikes and cars) make sharing the road safe for even timid riders.

There are also shorter side trails for hiking and biking. NOTE: Wildlife Drive is one-way for all traffic. Unpaved Indigo Trail is not the best place to ride with skinnier bike road tires, so plan accordingly.

Education Center: 9 a.m.-4 p.m. through Dec. 31; 9 a.m.-5 p.m. after Jan. 1.

Information: [fws.gov/dingdarling](http://fws.gov/dingdarling)

An entrance fee of \$5 per vehicle and \$1 per pedestrian/bicyclist over 15 is required. Visitors with a current Federal Duck Stamp, Senior Pass, Access Pass, Annual Pass or Refuge Annual Pass are not required to pay the entrance fee. A self-guided tape/CD about the Wildlife Drive and a souvenir booklet are available for purchase in the Education Center.

Bike rentals are available at Tarpon Bay Explorers; information online at [tarponbayexplorers.com](http://tarponbayexplorers.com)

### Upcoming events

#### Running/walking:

- Saturday, Oct. 5: Lexington Cares 5K, Lexington Country Club, South Fort Myers ([ftmyerstrackclub.com](http://ftmyerstrackclub.com))
- Saturday, Oct. 19: Sanibel 10K Race 4 F.I.S.H., Sanibel Community House ([ftmyerstrackclub.com](http://ftmyerstrackclub.com))
- Saturday, Oct. 26: Race the Roof 5K/15K, Verandah, East Fort Myers ([ftmyerstrackclub.com](http://ftmyerstrackclub.com))
- Sunday, Nov. 10: Streets Alive!, downtown Fort Myers River District ([streetsalivelee.org](http://streetsalivelee.org))
- Monday, Nov. 11: Veterans Day 5K, Midpoint Bridge ([ftmyerstrackclub.com](http://ftmyerstrackclub.com))
- Thursday, Nov. 28, Turkey Trot 5K, Cape Coral Hospital ([ftmyerstrackclub.com](http://ftmyerstrackclub.com))
- Sunday, Dec. 8: Everyone Runs, JetBlue Park. 5K and half-marathon ([everyonerides.org](http://everyonerides.org))

#### Cycling and other events:

- Friday-Sunday, Oct. 25-27: Share the Road Celebration of Cycling, DeLand, FL ([bikeflorida.org](http://bikeflorida.org))
- Sunday, Nov. 10: Streets Alive!, downtown Fort Myers River District ([streetsalivelee.org](http://streetsalivelee.org))
- Sunday, Nov. 10: River Ride, Caloosahatchee Regional Park, Alva (<http://crca.caloosahatchee.org>)
- Sunday, Nov. 29: Turkey Leg Century Ride, Publix, Six Mile Cypress at Daniels Parkway ([caloosariders.org](http://caloosariders.org)) (Note: A self-supported ride)
- Sunday, Dec. 8: Everyone Rides, JetBlue Park. 15, 30, 62 and 100 mile rides — Fort Myers ([everyonerides.org](http://everyonerides.org))
- Saturday-Sunday, Jan. 18-19, Tour de Cape, Cape Harbour Resort, Cape Coral (<http://tourdecape.net/>)

— **BikeWalkLee** is a community coalition raising public awareness and advocating for complete streets in Lee County — streets that are designed, built, operated and maintained for safe and convenient travel for all users: pedestrians, bicyclists, motorists, and transit riders of all ages and abilities. Information, statistics and background online at [BikeWalkLee.org](http://BikeWalkLee.org).

## 5. Biking on Cape Coral

### **BikeWalkLee Blog: Thursday, August 8, 2013**

<http://bikewalklee.blogspot.com/2013/08/bwl-column-plenty-of-choices-to-bike.html>

## **BWL Column: Plenty of choices to bike, walk in Cape Coral**

[News-Press "Go Coastal" section, August 8, 2013](#)

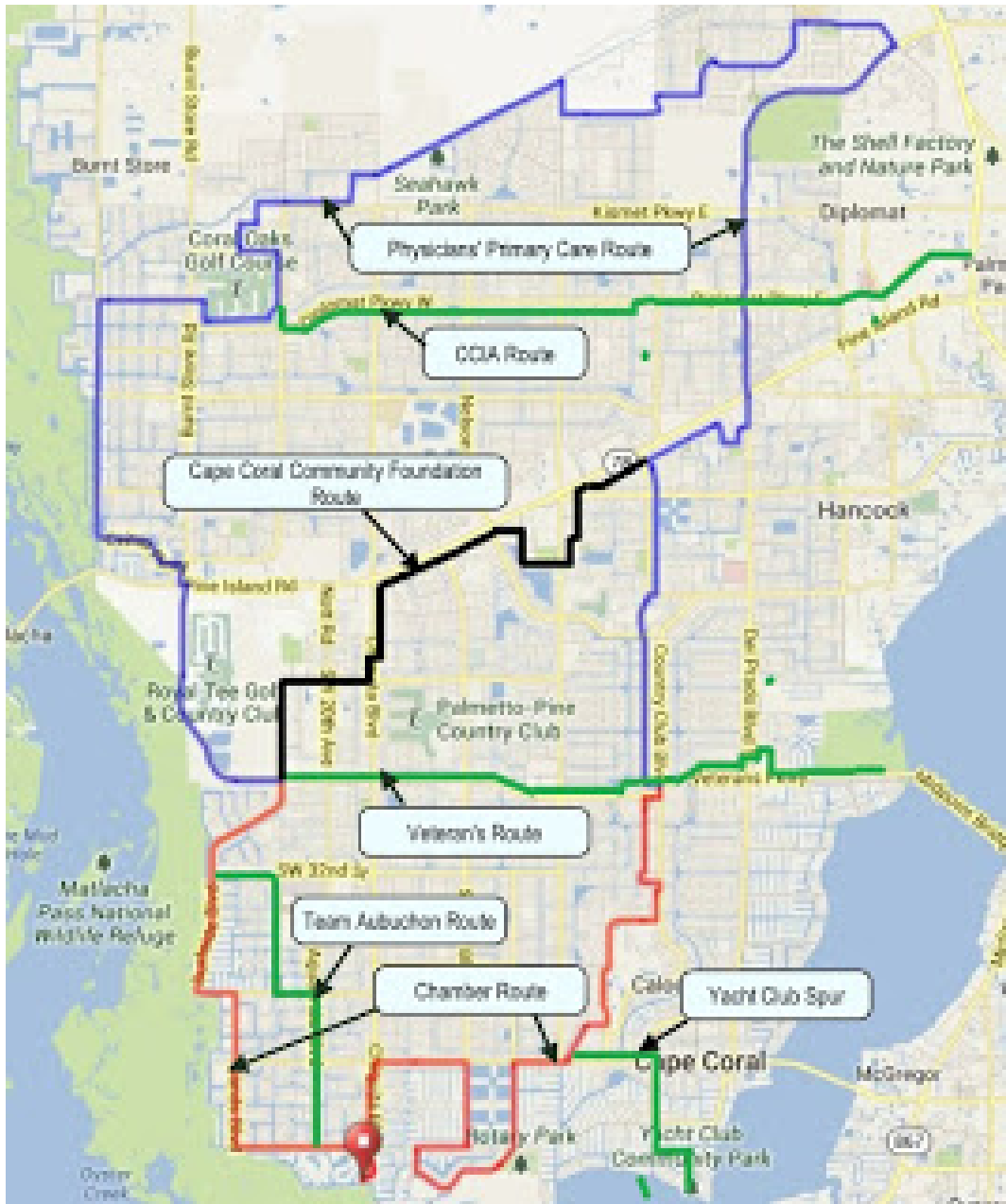


News-Press photo

*This week's BikeWalkLee column highlights the great work of Cape Coral Bike-Ped in bringing an upcoming 90-mile bike route system to reality.*

Looking for a place to ride in Cape Coral? Your choices are good and getting better all the time – thanks to the commitment of a core of concerned citizens to turn the Cape into a bicyclist's dream. The citizens are the many members of Cape Coral Bike-Ped (CCPD), which formed less than a year ago to promote safer bike-ped options in the county's largest city. The strategy is to connect existing bike-ped paths – bike lanes, sidewalks, low-traffic streets – into a more effective network by spending infrastructure dollars in partnership with city government and other entities.

And the result? A stellar show of support for its initial efforts, the beginnings of a mapped and branded bike-ped network and, eventually, a network of more than 90 miles of connected cycling routes throughout the city.



But those ready to ride today don't have to wait. [Head to this link](#) to find myriad maps showing current planned routes that ring the city – complete with distances, directions, and more. Routes can run from less than 3 miles up to 50 miles, giving every level of rider a reasonable option.

Impressed? Wait until you see the roster of sponsors CCBP has put together to support this growing network with signage to show the way and donations to help the city complete crucial connections that will make this network even more effective. They include:

- Physicians' Primary Care
- The Cape Coral Chamber of Commerce
- Team Aubuchon
- The Cape Coral Community Foundation
- The city's Parks & Rec Department
- The Cape Coral Construction Industry Association

Each has taken on the task of raising funds to make one of these routes a reality, to assist the city in making the necessary network connections to build this citywide circuit and turn the Cape into a cycling destination. Signage to designate the various routes and the specific route detail are being worked on, so stay tuned for updates on construction details. All the routes tie together (eventually), and of course will link up with existing county bike infrastructure to really complete the cycling connection.

It's a lesson we're seeing more and more communities learn: Bike-ped infrastructure gets more use when it gets people from Point A to Point B (and beyond) safely and surely... and that seeing people out biking and walking inspires others to join them, building momentum and awareness.

To get this far this fast takes strong community support, true. But it also takes a few dedicated individuals making this their mission – and CCBP has been fortunate to find just that in group founder Carolyn Conant and a handful of Cape citizens such as Mike Swanson, the coordinator responsible for creating the various routes, who saw a need, identified a solution and worked with the city and the community to make it happen.

Happen it did – and bicyclists throughout Southwest Florida can be thankful for that.

*BikeWalkLee is a community coalition raising public awareness and advocating for complete streets in Lee County—streets that are designed, built, operated and maintained for safe and convenient travel for all users: pedestrians, bicyclists, motorists, and transit riders of all ages and abilities. Information, statistics and background online at [www.BikeWalkLee.org](http://www.BikeWalkLee.org).*

## **6. MPO Countywide biking facilities map**

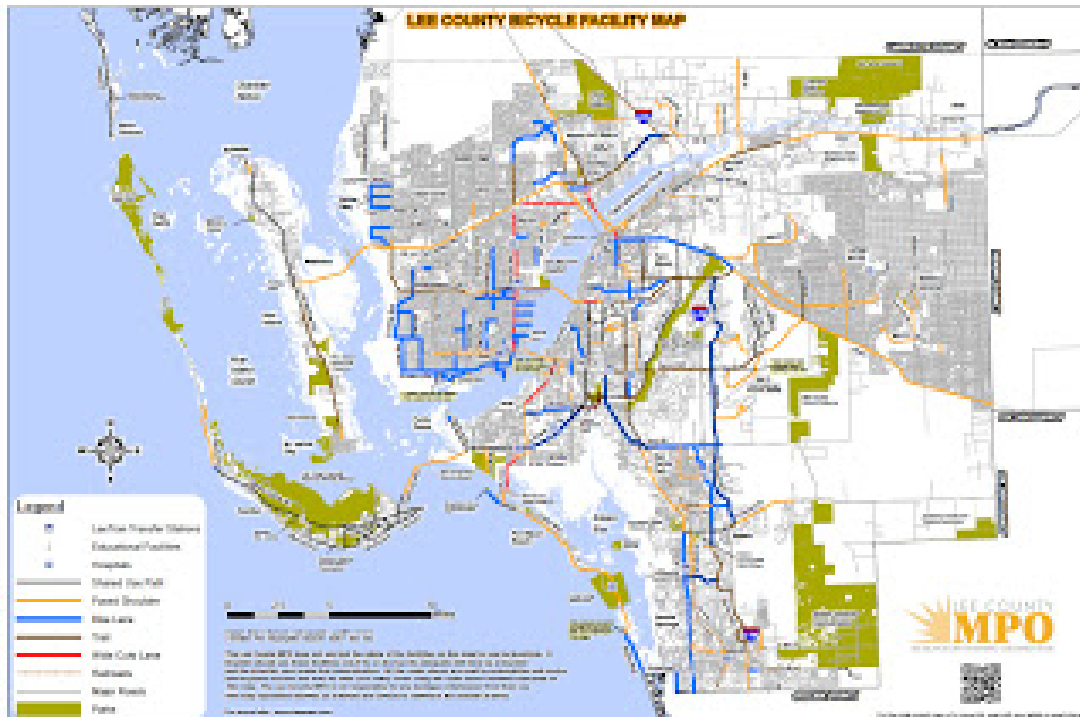
### **BikeWalkLee Blog: Thursday, February 21, 2013**

<http://bikewalklee.blogspot.com/2013/02/bwl-column-new-map-highlights-lee.html>

**BWL Column: New map highlights Lee County bike routes**

**News-Press, Feb. 21, 2013**





[BikeWalkLee's column in this week's News-Press Go Coastal section](#) highlights the new bicycle facilities map produced by the Lee MPO. Thanks to the BPCC and staff! Hard copies of the map should be ready for distribution in another week.

Sometimes a map helps you get to where you want to be by showing you the best route. Sometimes, however, a map can show you where you want to be by highlighting what's missing to enable you to get there.

The [new bike map](#) being produced by the Metropolitan Planning Organization achieves both of those goals. It's a guide for cyclists who want to transport themselves around the county by bike, to show them the routes available. But it's also a guide for bike advocates and planners to identify gaps in the current bicycle infrastructure, the places where a little bit of new asphalt could make a big difference in bikeability.

Right now, maps are available online only, but printed versions are expected by the end of February. It replaces the last bike map published in October 2006, and comparing the two shows the significant improvements in bike infrastructure the county has seen in the ensuing six-plus years. Looking at the new map also shows the infrastructure work remaining to be done, where a lack of colored lines or a gap between two existing systems is clear.

Thanks for the MPO map goes to the organization's Bicycle Pedestrian Coordinating Committee, which spearheaded the update and helped review and verify the routes.

"It was a recommendation that came out of the Bicycle/Pedestrian Master Plan," said MPO executive director Don Scott. "For the rider, it does encourage use, enticing some people to take their bike instead of driving, giving recreational opportunities and getting out to different destinations.

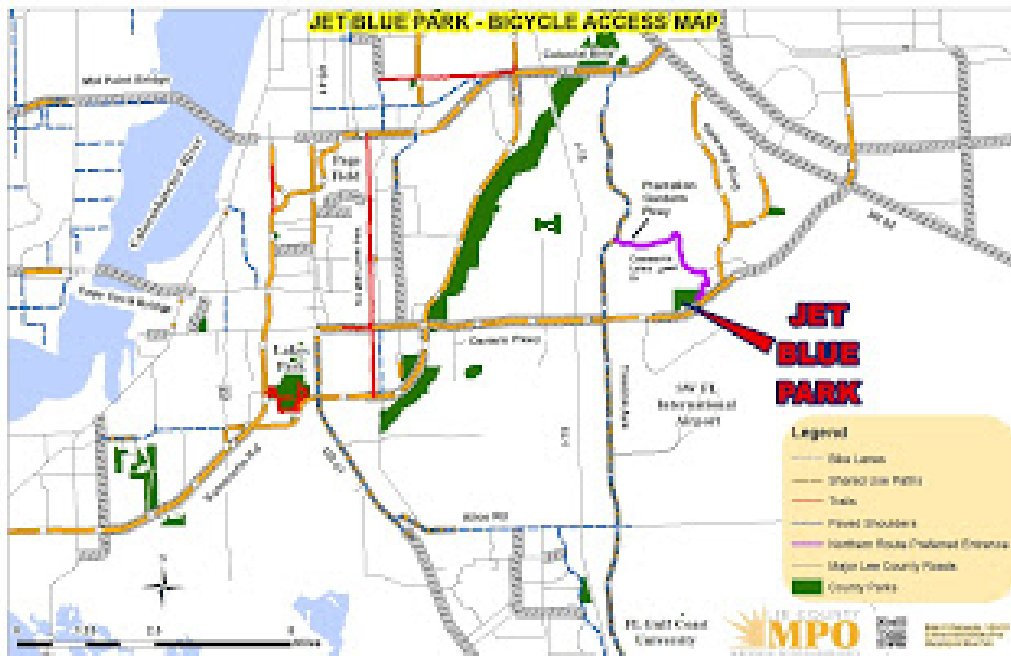
The MPO hopes to update this map more regularly, perhaps even annually. “One important part is to keep working on filling in the gaps,” Scott said. “I encourage people who use the map to forward suggestions that we can incorporate into future versions.”

#### Related Links

- [MPO Bicycle/Pedestrian Master Plan](#)
- [Lee County bicycle facility map](#)

### The old ballgame

Speaking of maps, if you’re interested in biking to spring training games, BikeWalkLee can help show you the way. On its [website](#) you’ll find maps showing routes to both JetBlue Park (for Red Sox games) and the Lee County Sports Complex (where the Twins play). Both sites are bike-accessible from neighborhoods throughout the county – even for those who prefer to ride in a more protected setting.



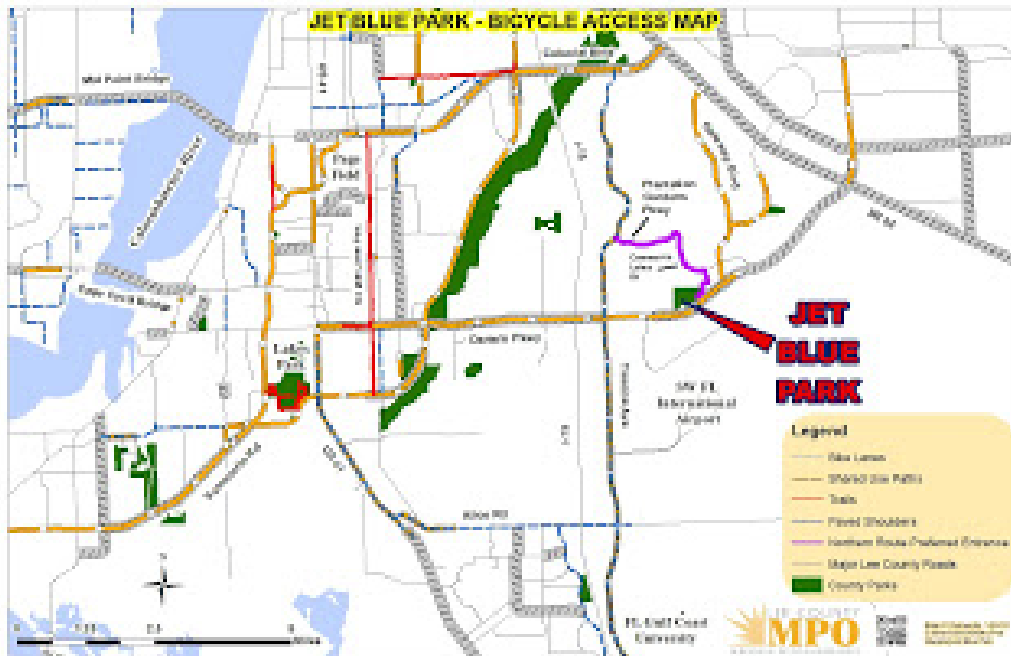
Biking to baseball not only gets you a little exercise (to work up a thirst for that ballpark beer?), but also helps you avoid the pre- and post-game traffic jams. Bike parking at both facilities is a little sparse... but if enough people start showing up on two wheels, perhaps that can be remedied.

## 7. Biking to Spring Training Games

### **BikeWalkLee Blog: Friday, February 3, 2012**

<http://bikewalklee.blogspot.com/2012/02/ride-your-bike-to-jetblue-parks-feb.html>

## Ride your Bike to JetBlue Park's Feb. 25th Grand Opening Event



### **Pedal to the Park!** **RIDE YOUR BICYCLE TO JETBLUE PARK'S** **Feb. 25<sup>th</sup> GRAND OPENING EVENT FOR THE** **NEW SPRING TRAINING HOME OF THE BOSTON RED SOX**

Want to see the new spring training home of the Boston Red Sox? BikeWalkLee and Lee County want to make it easy for you to “hit for the cycle” by pedaling to the park to avoid the event traffic.

The Boston Red Sox and the Lee County Sports Authority will host a Grand Opening Event on Saturday, Feb. 25, from 1:00 to 4 p.m. at the new JetBlue Park off Daniels Parkway. The event will be preceded by a ribbon cutting ceremony at 11:30 a.m. to mark the first official day of operations at the new facility, and admission to the park will be free of charge.

Bicycle riders of all ages and skill levels are encouraged to ride their bicycles to this event! Join a planned ride (see below), or urge your neighborhood association or place of business to plan a ride to the ball park to participate in the festivities.

“Riding your bike to the grand opening ceremony is a great way to celebrate the new spring training home of the Boston Red Sox along with Lee County’s growing commitment to support alternative transportation options and make our streets safer for bicyclists,” said Lee County Commissioner Ray Judah.

“It’s also a healthy way to enjoy the beauty of Southwest Florida and avoid the traffic jams to boot!”

#### **Bike Parking Corral**

BikeWalkLee will offer a bike parking corral – a designated area to safely park your bike for the duration of your visit to the park. BikeWalkLee volunteers will check your bike in and out and staff the corral from 11:00 a.m. to 4:00 p.m. at no cost. So, leave your car behind and park your bike in our secure corral while you enjoy the park's opening day!



### **Biking Routes & Maps**

Several routes and starting points are being planned to take advantage of the Recreational Loops, a system of roadways and paths that link some of Lee County's parks and entertainment venues. These loops are part of the countywide Bicycle and Pedestrian Master Plan adopted by the Metropolitan Planning Organization in May 2011.

The **JetBlue Park—Bicycle Access Map** (<http://www.bikewalklee.org/RedSoxArt/JetBluePark.pdf>) shows the various ways to access the park by bicycle, along with the types of bicycle facilities on each of these roads. The preferred entrance to JetBlue Park for bicyclists will be the East Gate on Daniels Parkway, which is noted on the map of the stadium facility, indicating the entrances for cyclists and the bike parking corral. (Click here: <http://bikewalklee.com/corral.html>.)

**Maps of eight suggested routes** are available at [www.BikeWalkLee.org](http://www.BikeWalkLee.org). On the website you'll find ride maps from the following starting points:

1. Gateway Community Pool,
2. [Daniels/Apalossa](#),
3. [Paradise Bikes](#),
4. [John Yarbrough Linear Park\(North\)](#),

5. [John Yarbrough Linear Park \(South\)](#),
6. [Lakes Park](#),
7. [FGCU](#), and
8. Trek Estero.

Feel free to plan your own unique route to the event.

**Planned rides:** Paradise Bicycles is inviting cyclists to start their ride from their store in Colonial Square Town Center ((9377 Six Mile Cypress Parkway). You can park for free in the large lot north of the store. You can either ride on your own from there, or join in an informal unsupported ride from there, starting at 12:30 p.m. There will also organized unsupported rides from Gateway Community Pool starting at 1 p.m., and at Daniels/Apalossa at 12:30 p.m. Click on the listed bike route map above for details.

**Park & Bike Option:** There are several options for biking to JetBlue Park if you live too far away or want just a short ride. For example, you can drive to Paradise Bicycles (9377 Six Mile Cypress Parkway and park by the store and bike from there.

**Volunteer Opportunities:** BikeWalkLee is looking for more volunteers to help staff the bike corral. If you can help out, please contact: Kelly Bishop at [bkbishop58@msn.com](mailto:bkbishop58@msn.com). Volunteers will receive a free "3 feet please" t-shirt, courtesy of Harvey Software, Inc. and Southwest Florida Bicycling's "3 feet please" campaign. (<http://swfbicycling.blogspot.com/> )

**Check for Updates:** Check BikeWalkLee's blog (<http://bikewalklee.blogspot.com/>) and its Facebook page for frequent updates and new information about routes, off-site parking, and volunteer opportunities. For more information or help in planning your ride, please contact: Steve Rodgers at [Gatewaycyclist@yahoo.com](mailto:Gatewaycyclist@yahoo.com).

**Post-event: bike to spring training games:** After you've biked to the grand opening event, you'll always want to pedal to the park for spring training games and other events held there. Not only does it avoid traffic congestion, it is fun, good for your health, and contributes to the sustainability of Lee County.

[Click here to read the News-Press 2/4/12 story about the opening event.](#)